

Princess Cruises (2012) - Lotus Spa signs
Produced with adobe illustrator/photoshop

Thank you for viewing my architectural portfolio

This is only a small portion of work I have created over the last 33 + years. I like to be creative and challenge myself.

Thanks, Pete

signage [sahy-nij] *noun*

graphic designs, as symbols, emblems, or words, used especially for identification or as a means of giving directions or warning.



portfolios



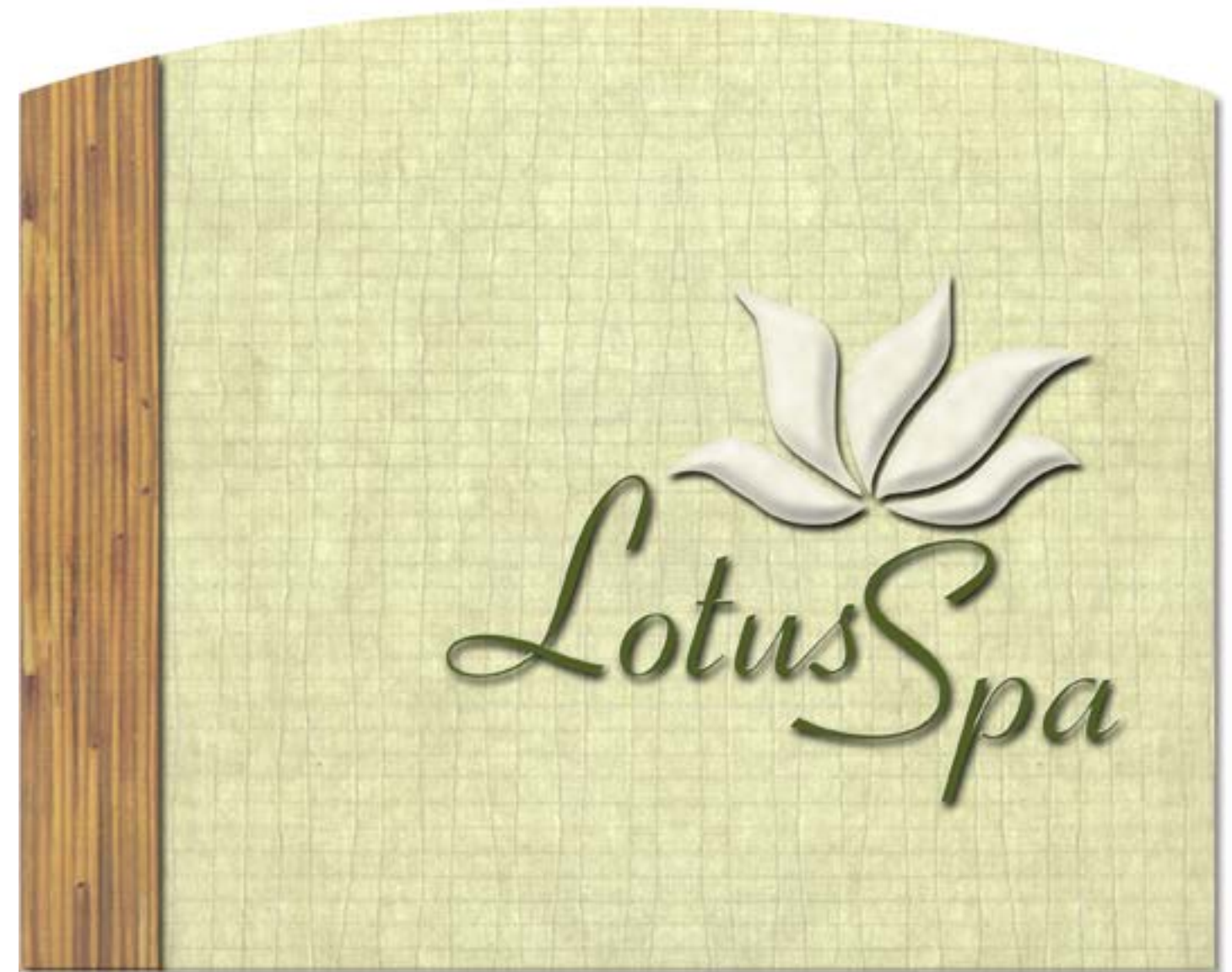
banner



safety



wayfinding



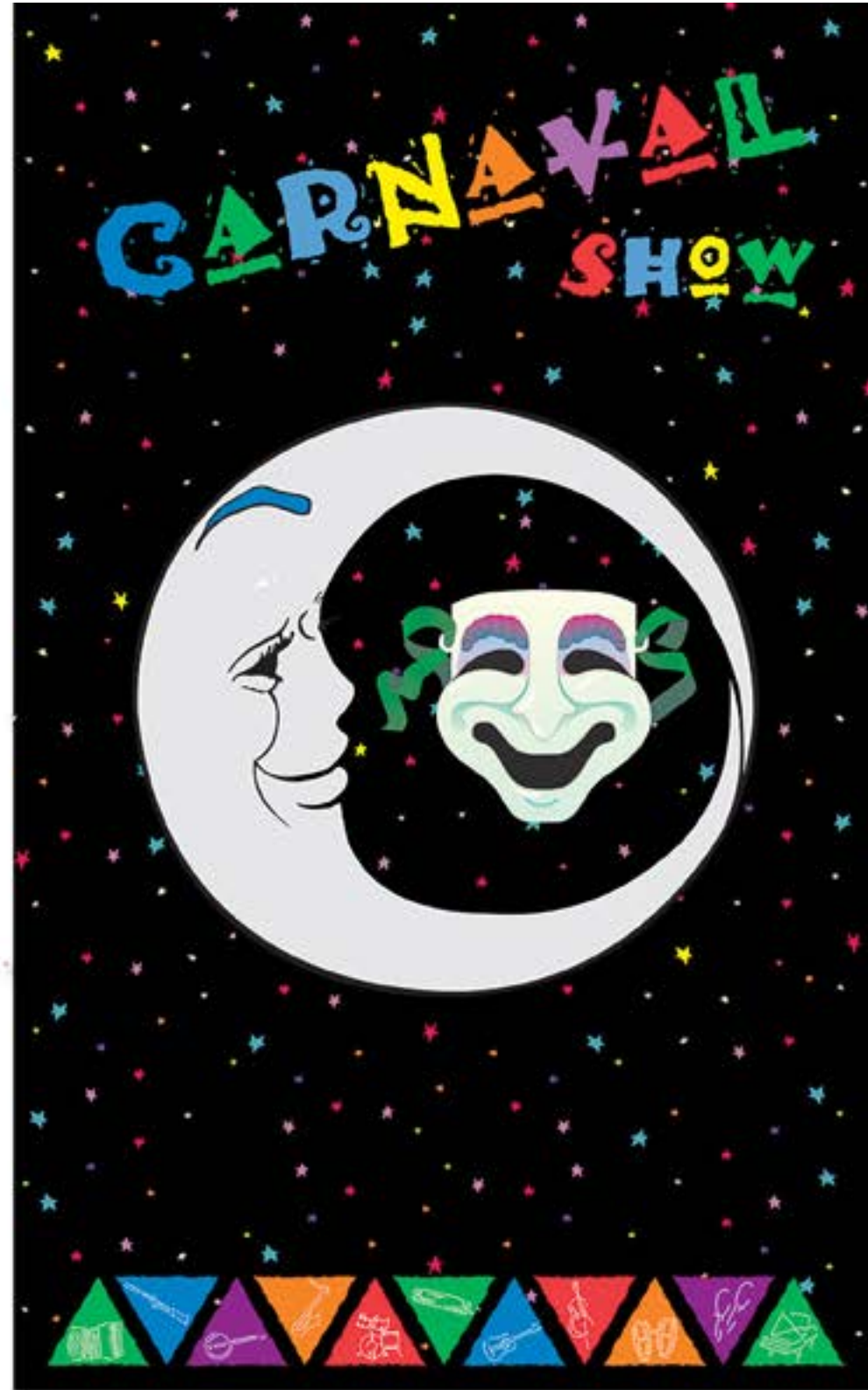
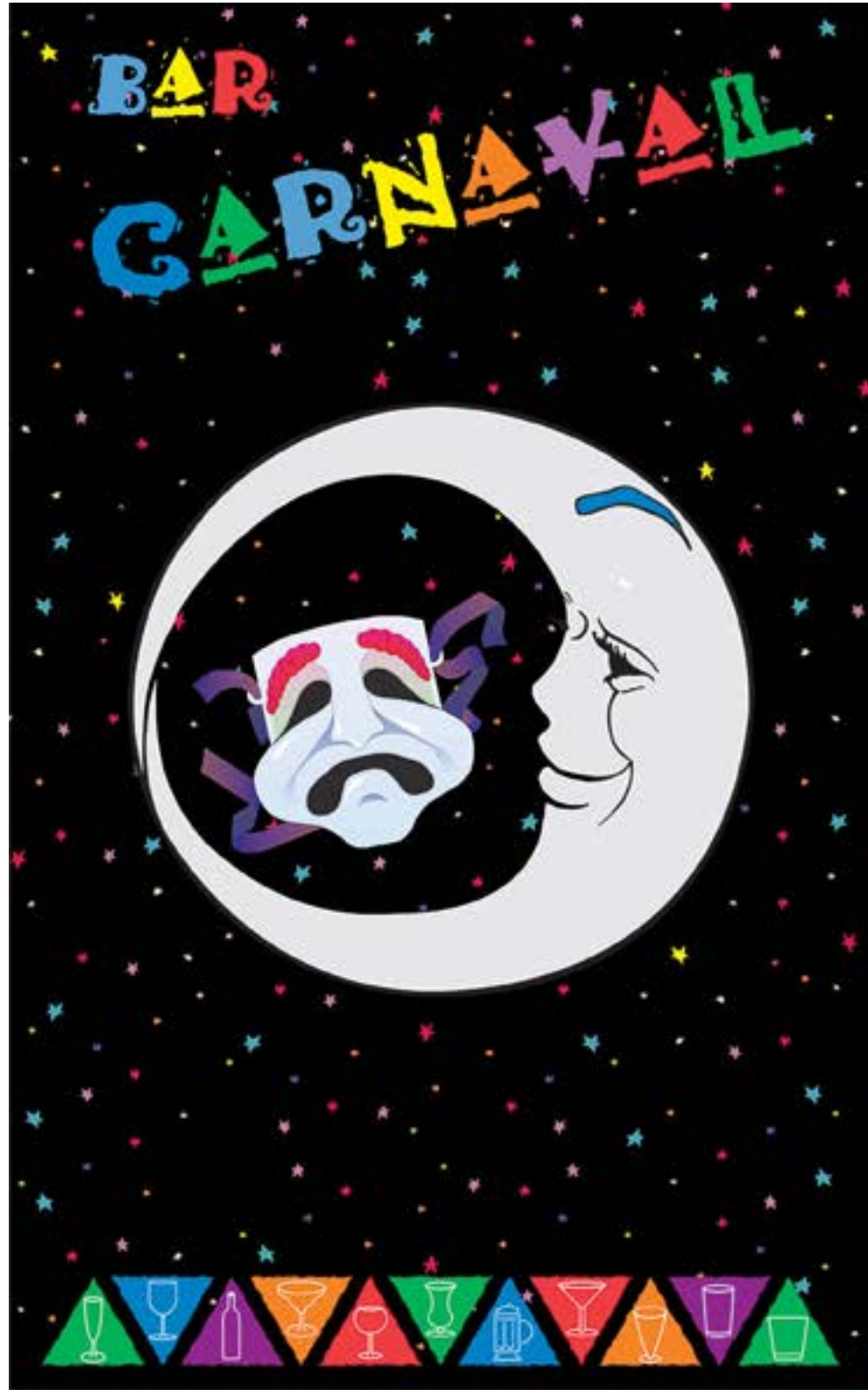
"Design won't save the world,
but it damn sure makes it look good"

— Mary Crawford, author

ISP Cruises (2009) - Vision Star Restaurante Altamira signs
Produced with adobe illustrator/photoshop



ISP Cruises (2009) - Vision Star Carnival Bar & Showroom signs
Produced with adobe illustrator/photoshop



ISP Cruises (2009) - Vision Star Public signs
Produced with adobe illustrator/photoshop



ISP Cruises (2015) - Ocean Endeavour Public signs
Produced with adobe illustrator/photoshop



ISP Cruises (2012) - Ocean Diamond Public signs
Produced with adobe illustrator/photoshop



Holland America Line (2010-2016) - Charity Golf Tournament signs
Produced with adobe illustrator/photoshop

Holland America Line® 2016 Golf Tournament

Signature Sponsors

Aerostream USA
Blue Water Shipping A/S
Bolidt Cruise Control Corp
C.P. Marine
Carrier Corporation
Case Marine, Inc
D2 Marine Solutions Inc.

Duap Industries Inc.
Hempel USA inc.
IWS – International Warehouse Services
Metric Marine & Industrial
Motor-Services Hugo Stamp Inc.
Navalimpianti USA Inc.

Siemens
TransGroup SEA
United Ship Service
Vigor Industrial
W and O Supply
Wartsila North America, Inc.
Witt Co.

Tournament Sponsors

Alfa Laval - PA.
Almaco Group, Inc.
AMI Exchangers LTD
Biancchi & Cecchi Service Inc.
Borderline International
Croon Elektrotechnik B.V.

Datrex Miami
Global Supply Company, Inc.
Greggs Marine Interiors, LTD
Jotun Paints Inc.
Marine Depot International
Multinal Group B.V.
Port Marine of California

Priano Marchelli & C Srl
Pump Industries
Starboard Marine Supplies
Total Marine Solutions
West Coast Insulation Inc.
Wilhelmsen Technical Solutions Inc.

Thank you, Holland America Line and Seabourn

Signs donated by  Maritime Associates, Inc. • www.marinesigns.com



Regent Cruises (2004) - Regent Public signs
Produced with adobe illustrator/photoshop

Swimming Pool & Whirlpool Rules

<p>There is no lifeguard on duty. Shower before entering pool and whirlpool Guests use the pool and whirlpool at their own risk. Diving and running are prohibited. Some fabrics may fade due to the combination of chlorine and sea water. The use of glassware is prohibited in and around the pool area. For your safety use the handrails and enter and exit slowly. Children under 16 years of age are not permitted to use the pool and whirlpool without supervision.</p> <p>Swimming pool bather load:</p>	<p>Pregnant women, elderly persons, children, individuals on medication or who have underlying medical conditions such as cardiovascular disease, diabetes, high or low blood pressure, anyone using anticoagulants, vasoconstrictors, vasodilators, stimulants, hypnotics, narcotics, tranquilizers and those who are particularly susceptible, such as those who are immunocompromised are warned against using the whirlpool. Please use additional caution when exceeding 15 minutes of exposure. No children/adults in diapers or who are not toilet trained are permitted in the pool and whirlpool. Do not use these facilities if you are experiencing diarrhea, vomiting, or fever.</p> <p>Whirlpool bather load:</p>
--	--

Swimming Pool & Whirlpool Rules

There is no lifeguard on duty.
Shower before entering pool and whirlpool
Guests use the pool and whirlpool at their own risk.
Diving and running are prohibited.
Some fabrics may fade due to the combination of chlorine and sea water.
The use of glassware is prohibited in and around the pool area.
For your safety use the handrails and enter and exit slowly.
Children under 16 years of age are not permitted to use the pool and whirlpool without supervision.
Pregnant women, elderly persons, children, individuals on medication or who have underlying medical conditions such as cardiovascular disease, diabetes, high or low blood pressure, anyone using anticoagulants, vasoconstrictors, vasodilators, stimulants, hypnotics, narcotics, tranquilizers and those who are particularly susceptible, such as those who are immunocompromised are warned against using the whirlpool.
Please use additional caution when exceeding 15 minutes of exposure.
No children/adults in diapers or who are not toilet trained are permitted in the pool and whirlpool.
Do not use these facilities if you are experiencing diarrhea, vomiting, or fever.

Swimming pool bather load: _____ Whirlpool bather load: _____



Croquet: General Rules

- **Object:** To win at croquet, a player or team must score the highest number of points. One point is awarded for every wicket passed through in the proper direction and proper order. (That means there are two points awarded for five of the wickets, 1 point each for four wickets, and one point for each stake for a total of 16 points).
- Each player must drive his ball around the course in the order indicated on the diagram to the right.
- When all the players on a team have completed the course, the game is over and the points are tallied.
- When a player hits the final stake, he ceases to take turns. It is sometimes to a team's advantage for a player to pass through all the wickets, but not hit the final stake in order to return to the field to help his team mates. However, this player must eventually hit the final stake in order to ultimately win the game.

Oceania Cruises (2016) - Sirena Public Signs signs
Produced with adobe illustrator/photoshop

Sirena Lounge

