

Thank you for viewing my photoshop portfolio

This is only a small portion of work I have created over the last 33 + years. I like to be creative and challenge myself.

Thanks, Pete

Photoshop [foh-toh-shop]

is a premier raster-based software designed for editing, retouching, and creating digital images, images, and graphics. It is used for tasks like color correction, compositing, and removing, adding, or manipulating elements in photos.



portfolios



illustration

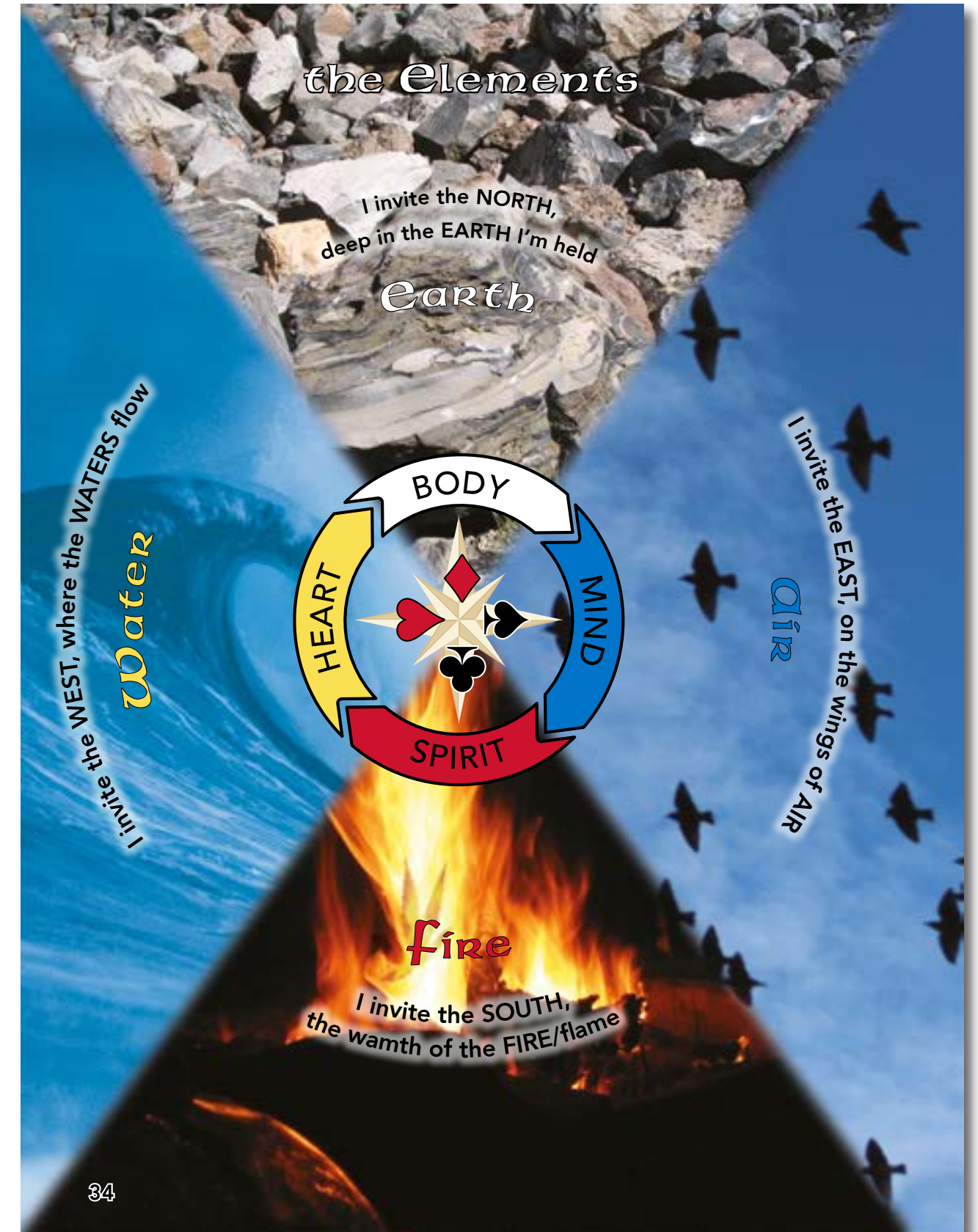


logo



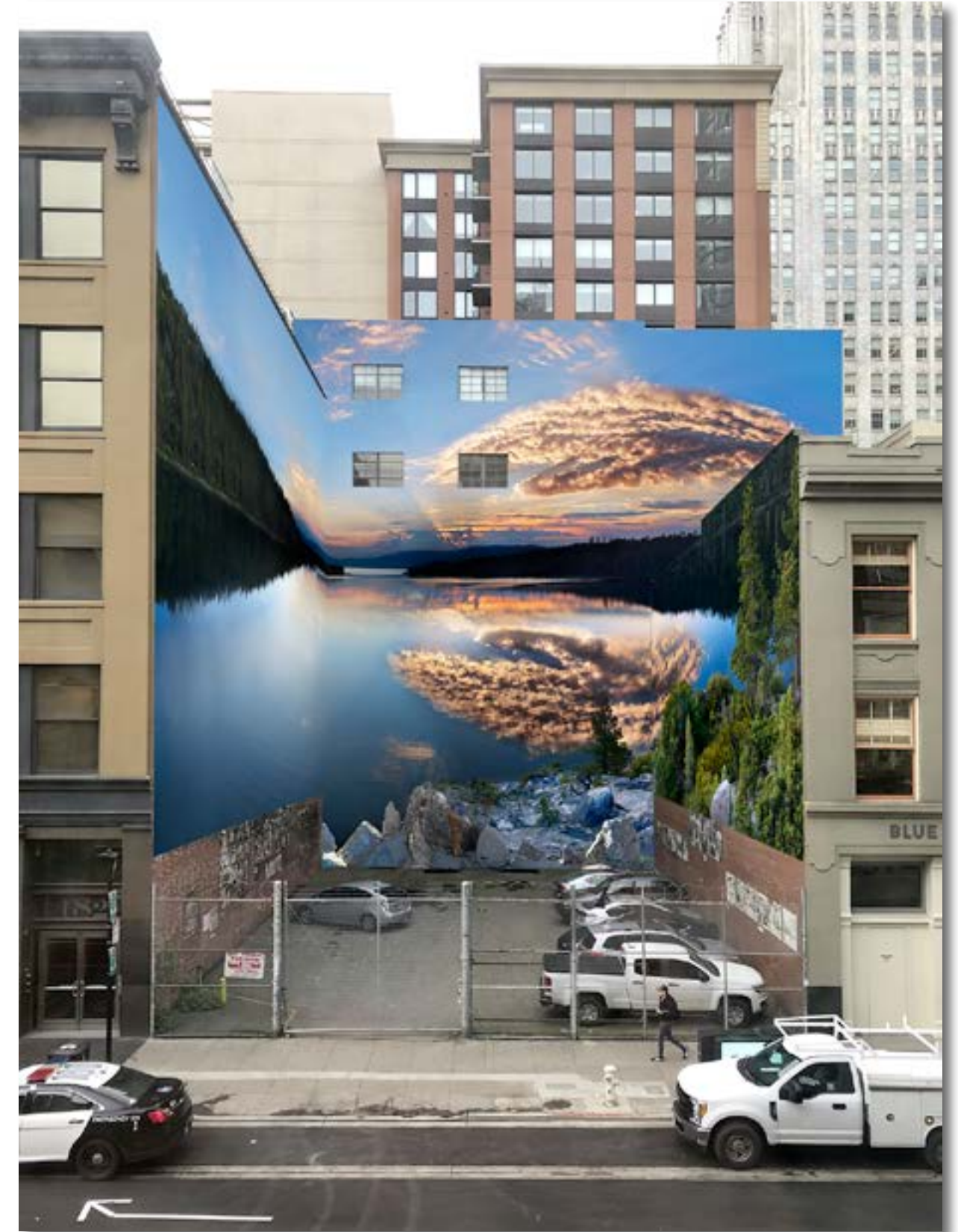
technical illustration

"I strive for two things in design:
simplicity and clarity.
Great design is born of those two things."
— Lindon Leader, graphic designer



BEFORE: Adolph Gasser building in downtown San Francisco
This is a rendering, this project is still in plan and permit

AFTER



BEFORE

This started by stitching 32 color frames merged together, and converting to grayscale with an adjustment layer

Removed skier from foreground, replaced far left tree, fixed snow on bottom right, filled in missing areas at top and bottom

This is fine art limited edition release
Original size 123 x 49"



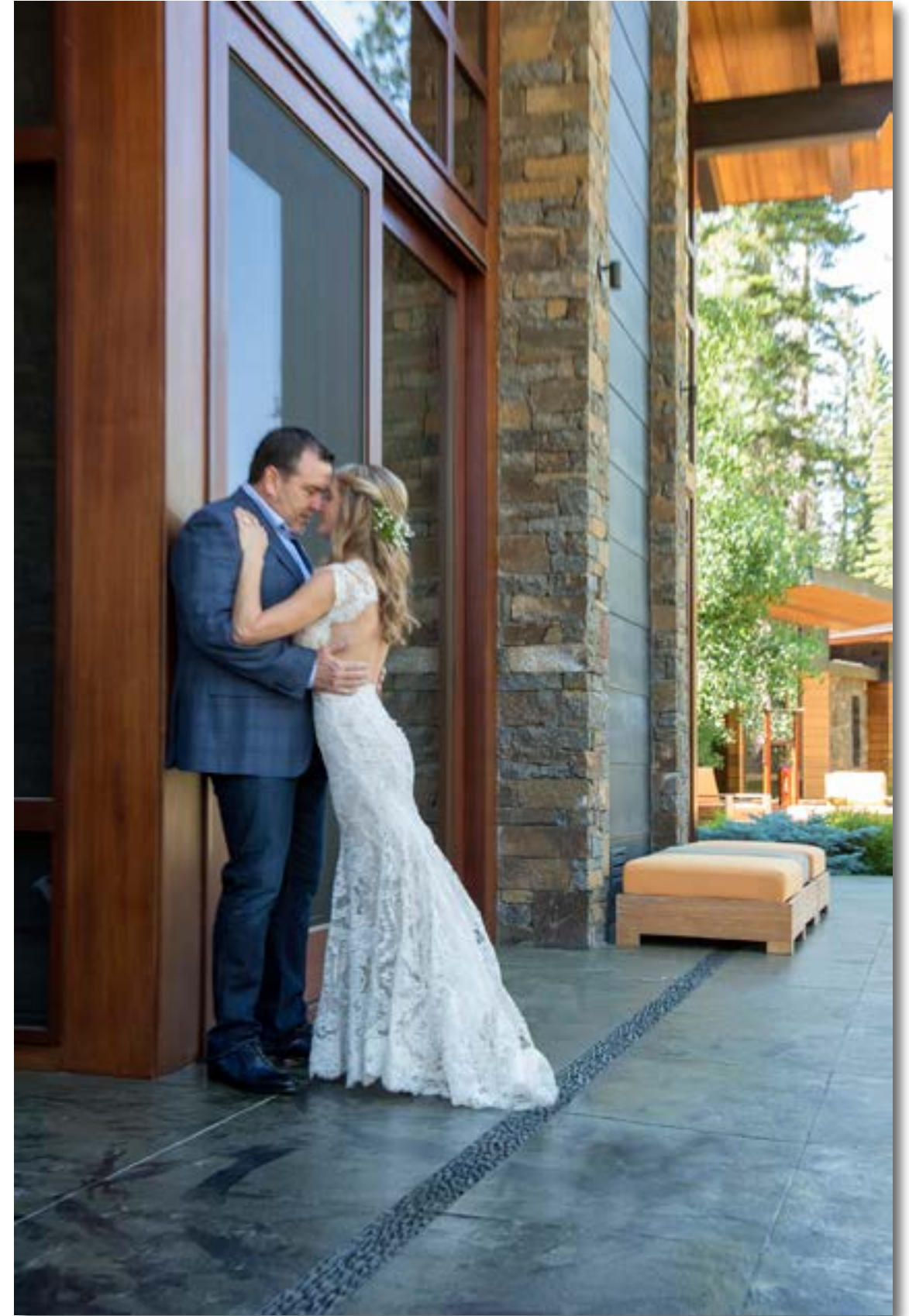
AFTER



BEFORE



AFTER - Removed dog from wedding photo



ORIGINAL



Removed boats
and family,
filled in
missing areas



Replaced
family with
sharper image



Original shot in 2017, Lake Tahoe was 6 feet low with a lot of exposed rock, mountains and trees lost all sharpness, when enlarging to desired size



This was shot in 2024, the lake was full so not as much exposed rock, images merged to create compsite



This was the cut apart, and replaced each side forest, sky and mountains



This is the finished image, installed in Raleys supermarket in Incline Village, NV



This is me sitting in front of finished installation, 5 panels, 4 planes



Background image



Replacement dog head



Final image: family image placed into background image

Family image



BEFORE



AFTER - Removed trees in foreground, filled in missing areas



ORIGINAL PHOTO



STAGE 1 Rendering - Change colors on wheels, change body to black to white gradient

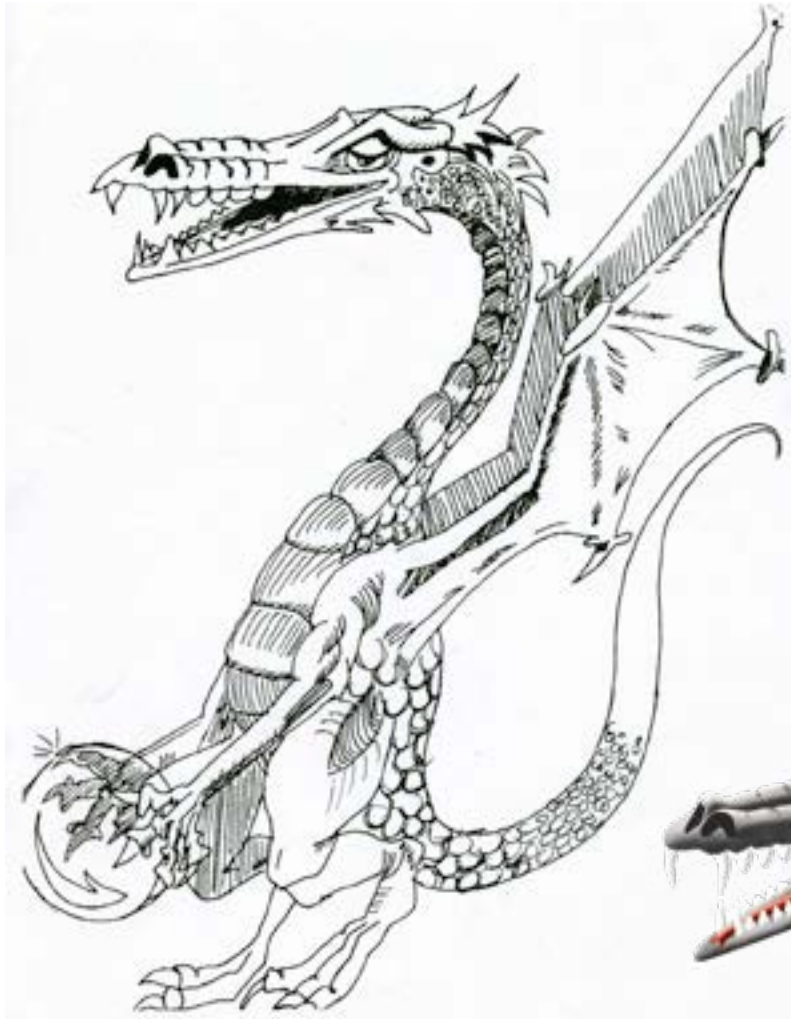


STAGE 2 Rendering - Add logos



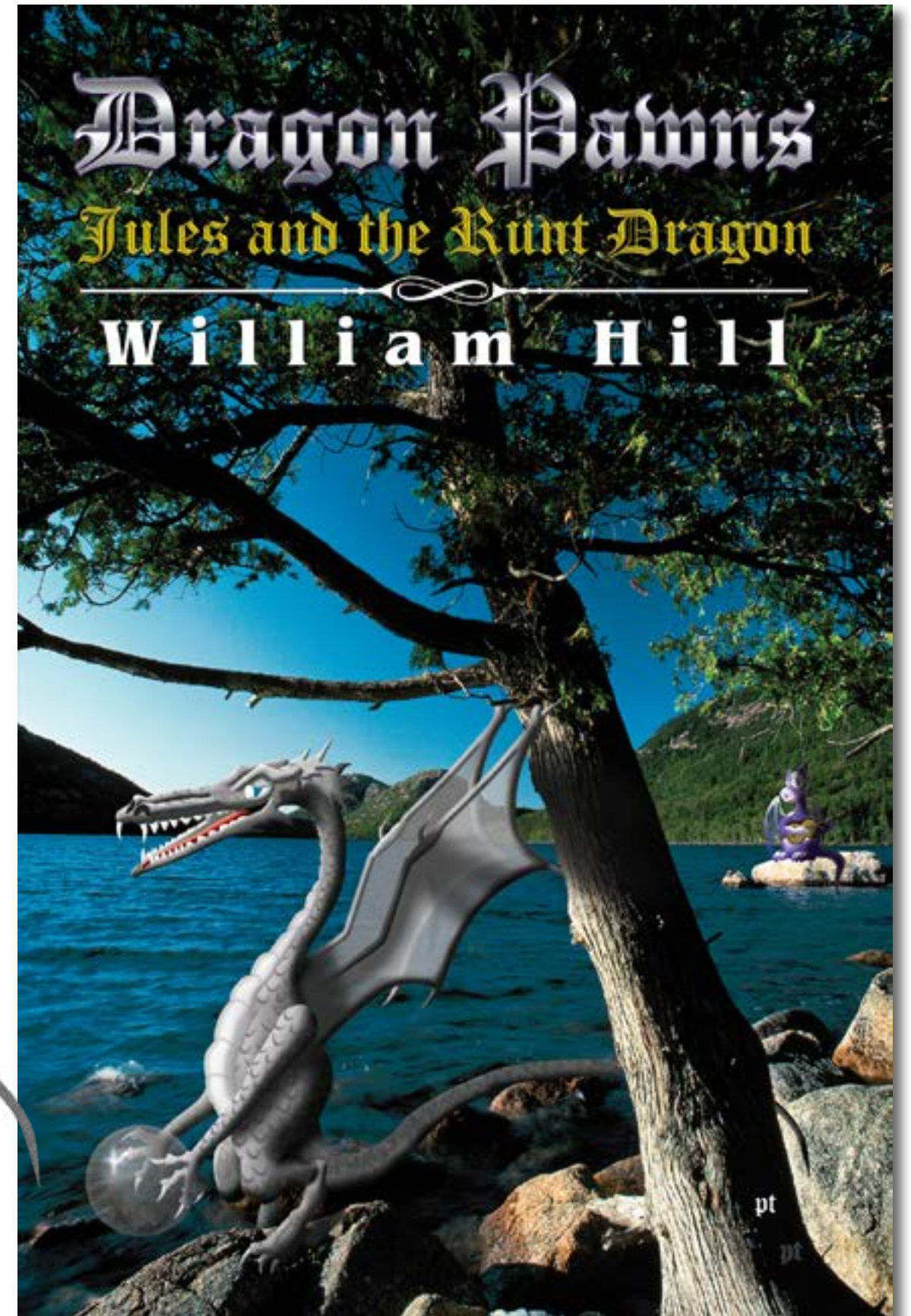
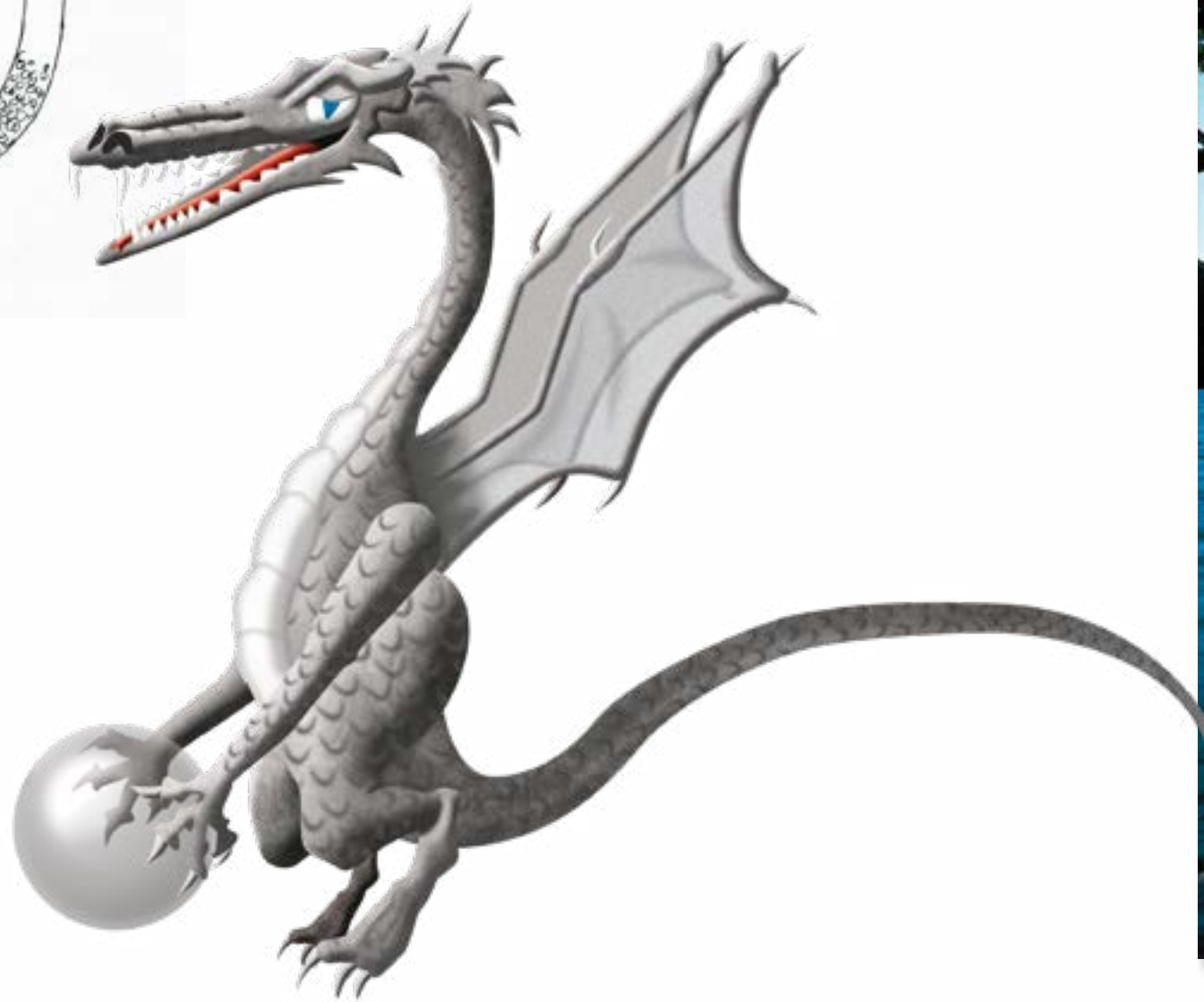
FINAL





Illustrated dragon by hand
in ink, scanned

Illustrated dragon in photoshop
Placed in book cover



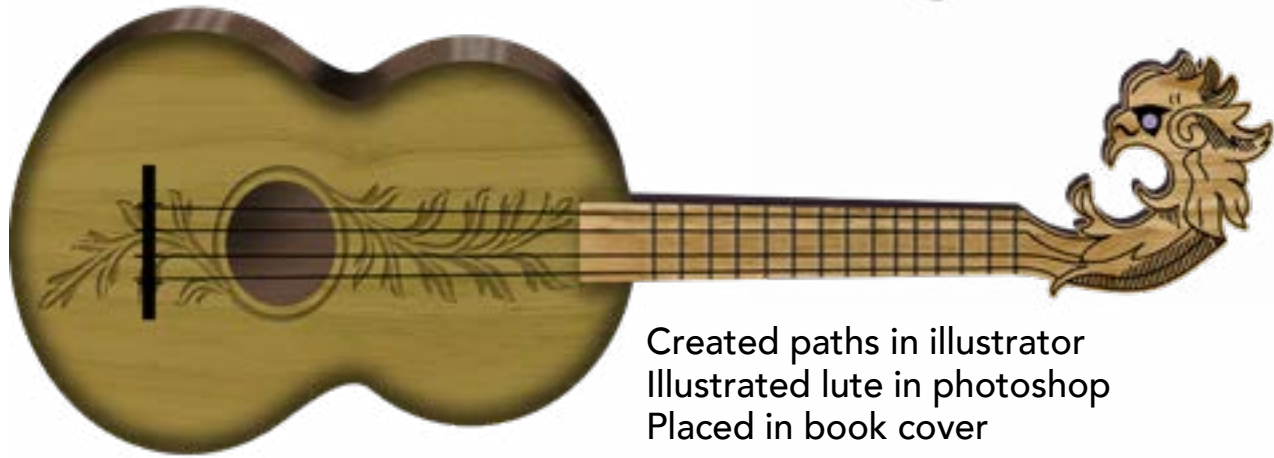
Scanned my hand and added fire



Created paths in illustrator
Illustrated dragon in photoshop
Placed in book cover



Created paths in illustrator
Illustrated sword in photoshop
Placed in book cover



Created paths in illustrator
Illustrated lute in photoshop
Placed in book cover

